

DECO - ROLL FED LABELING MACHINE

DESIGNED FOR THE LONG RUN

Trepko

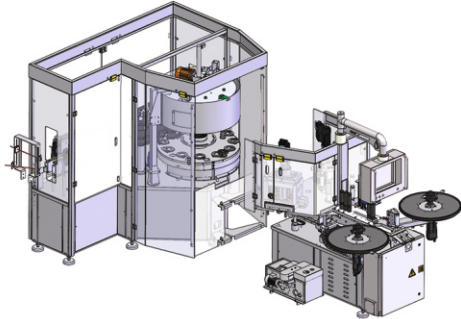


Worldwide supplier 
of processing, filling & packaging machines

**Blades long life
(300 million
cuts)**



Achieving a good return on investment, through equipment with low and predictable operational costs, is critical for the competitive world of modern business.



Design

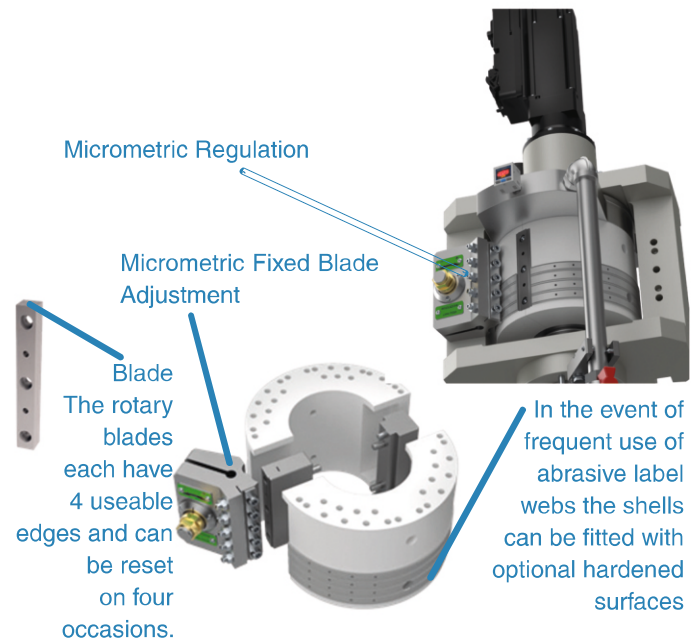
Smart and Sturdy machine design with simple and well-defined maintenance requirement, combined with Modular Design Philosophy throughout, gives full control of short-term, mid-term and long-term Operational Costs.

The Deco series machines feature a compact, modular design. The base machine (frame and carousel) and labeling station operate independently, connected only by 2 cables. This design significantly reduces transportation and installation costs, requiring just 2 small crates for shipping.

Additionally, the Deco offers complete accessibility also for short-statured operators to all parts of the machine and comprehensive VISUAL CONTROL over all mechanical and electronic components, allowing direct access to functional parts without the need to remove any guards.

Cutting Drum

Elevated cutter performance and reduced blade maintenance



Key Features

- Easy to Control - Visibility and Access: Users can easily access all parts of the machine for maintenance and control.
- Low Maintenance: The machine requires infrequent maintenance.
- High Speed: Capable of processing between 100 to 1000 bottles per minute.
- User-Friendly: Convenient to operate, with easy setup and format changes.
- Modular Design: The machine consists of two modules—label station and carousel—making it easy to deliver and assemble.
- Quick Changeover: Bottle/label format changes can be completed in under 15 minutes.
- Versatile Container Compatibility: Suitable for PET, glass, and metal (can) bottles.

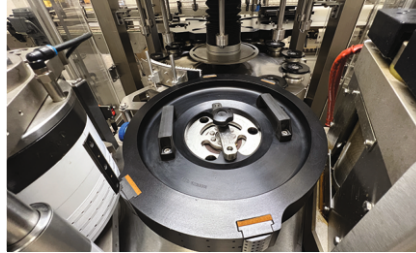
- Label Variety: Capable of applying both wrap-around and partial labels.
- High Precision: Labels are applied accurately without gaps.
- Servomotor Technology: All machine units are powered by servo drives.
- No Mechanical Transmissions: Each rotary shaft is directly controlled by its own servomotor, including the infeed/outfeed star wheel and vacuum transfer drum.
- Flexible Installation: The labeling machine can be installed before or after the filling process, suitable for both empty and filled bottles.

EFFECTIVE AND EFFICIENT GLUE SYSTEM



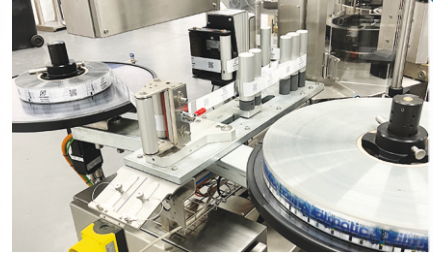
Glue System

- Precision Stainless-Steel Glue Roller: Ensures consistent glue application.
- Micrometric Adjustable Glue Scraper: Provides exact control over glue application.
- Advanced Glue Bar Design: Ensures smooth and clean operation.



Transfer Drum

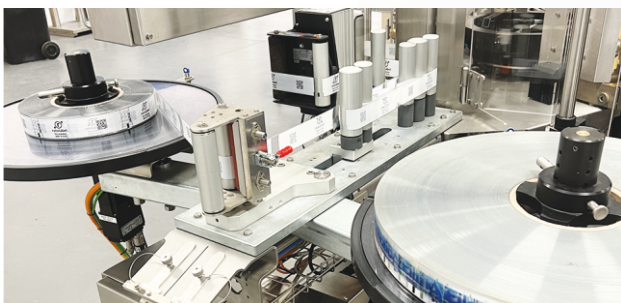
- Precision Drum Design: Ensures fast and consistent label handling and application.
- Vacuum Distributor: Features auto-lubrication via a quick-change grease cartridge.



Label Web Control

- Accurate tension control with linear position transducer
- Web Tracker: Ensures consistent high-quality label application.
- Servo-Driven Reel Unwind Drives: Provide precise web tension control.
- Precise Cut Synchronization: Aligns perfectly with label graphics.
- Fast Stop and Start Capabilities

Auto Splicing



Autosplicing system is available as an option, featuring high efficiency and reliability with its Twin Roll Design and no-stopping-splice on the fly capability.

Container Rotation Options



Option 1 - Rotation by belt
For standard cylindrical container applications.

Option 2 - For square and shaped containers requiring specific label graphic location.



Option 3 - For applications that require orientation or handling special shaped containers.

FLEXIBILITY

IN

APPLICATION

BRANDS OF USED COMPONENTS

Pneumatic
Software
Automation Component
Inverter drives
Switchgear
Relays
Safety Circuit
Bottle change parts
Label change parts

BRAND NAME

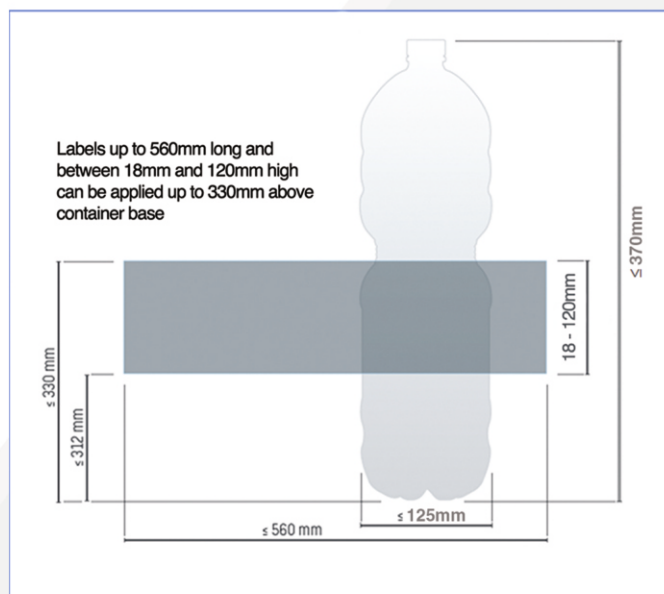
SMS / FESTO
Filmatic
CMZ (Italy)
Yaskawa (Japan)
ABB (Swiss)
Phoenix
Pizzato (Italy)
Filmatic
Filmatic & Italy

Filmatic labelling machines are 100% designed & manufactured at our factory, Paarl, South Africa.

For partial label : bottle volume from 30 ml up to 10,0L

For wrap around label bottle volume from 30 ml up to 8,0L

LABEL DIMENSIONS	
Minimum Length:	160 mm
Maximum Length:	570 mm
Minimum Height:	30 mm
Maximum Height:	120 mm
CONTAINER DIMENSIONS:	
Minimum Diameter:	50 mm
Maximum Diameter:	125 mm*
Minimum Height:	150 mm
Maximum Height:	370 mm
* If bottle diameter is bigger than 170 mm, we can apply a partial label	
SPEED:	
Maximum Machine Speed:	24 000 bph on cylindrical containers



CONTAINERS CONFIGURATIONS



WATER
Round, square and rectangular
0.5L to 2.0L

DAIRY PRODUCTS
Round, square and rectangular
0.1L to 4.0L

CSD
Round, hexagonal and polygonal
0.2L to 3.0L

FRUITS CONSERVES, PICKLES IN GLASS
Square, round, oval and polygonal 0.2L to 3.0L

CONCENTRATES, OILS, DETERGENTS AND INDUSTRIAL PRODUCTS
Round, square and rectangular, including "jug with handle" and cap not on centre line
1.0L to 5.0L

SOUPS, SAUCES, MEAT, COFFEE AND PET FOODS
Round, square and rectangular
1.0L to 3.0L

PARTIAL LABEL ALL BOTTLES TYPES
*the diameter of the bottle can be bigger than 170 mm

SAFETY DECO COMPLIES WITH:

- CE Compliance: DECO meets CE safety regulations.

- Electro-Pneumatic Systems: Meet CE safety standards.

- Safety Door Switches and Control Systems: Comply with CE safety standards.